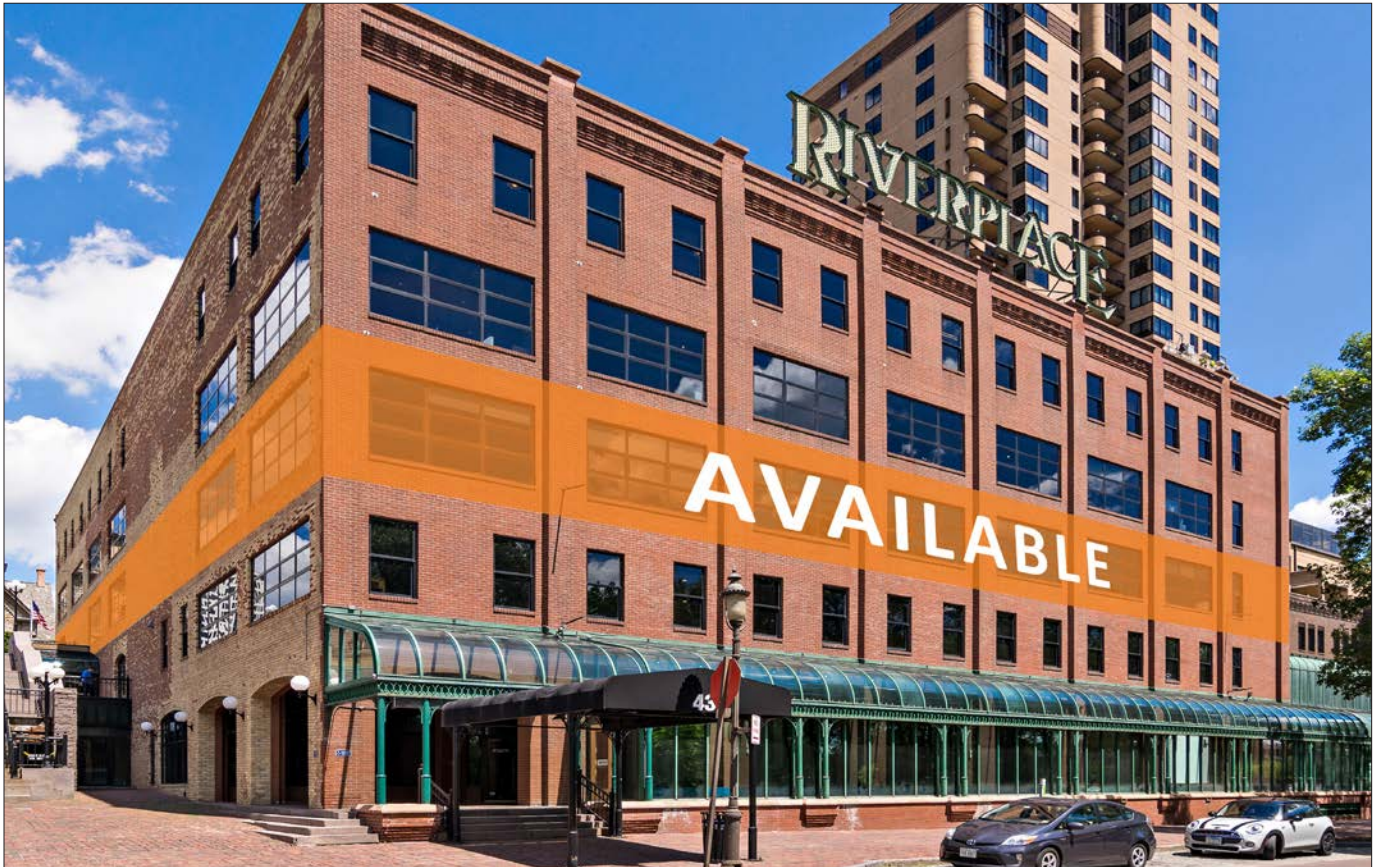


# RIVERPLACE

43 SE Main Street, Minneapolis, MN 55414

## Long-term Creative Office Sublease



### AVAILABILITY

<b>Term</b>	Through 12/31/30
<b>Floor</b>	3, Full Floor
<b>Size</b>	18,807 SF
<b>Lease Rate</b>	Negotiable

### KEY FEATURES

- Breathtaking space, must see!
- Amazing views of the river and city
- Building undergoing major updating and renovations throughout
- Center atrium, lots of natural light
- Brick and timber and newly built-out
- Very functional and attractive layout
- Dining at Wilde Café & Spirits
- Excellent neighborhood walkability to shopping, river, entertainment, premier dining, and parks
- Ample on-site parking with electric vehicle charging stations
- Indoor bicycle storage



**Jim Kenney | Senior Vice President**

2550 University Ave. W. #416S

St. Paul, MN 55114

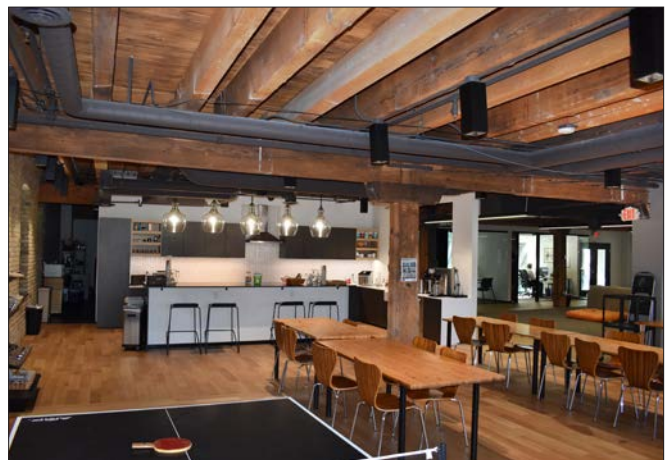
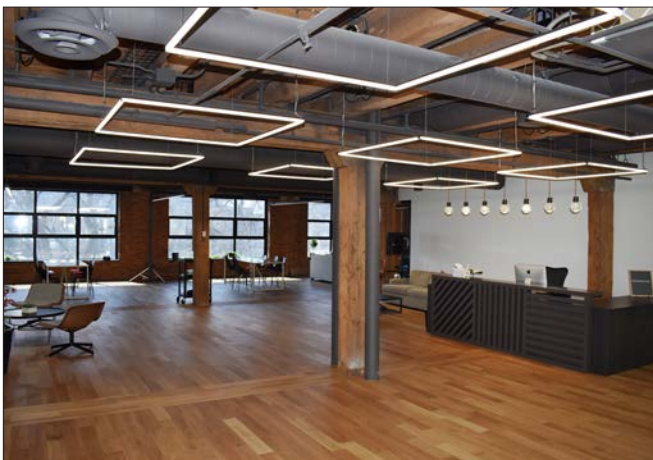
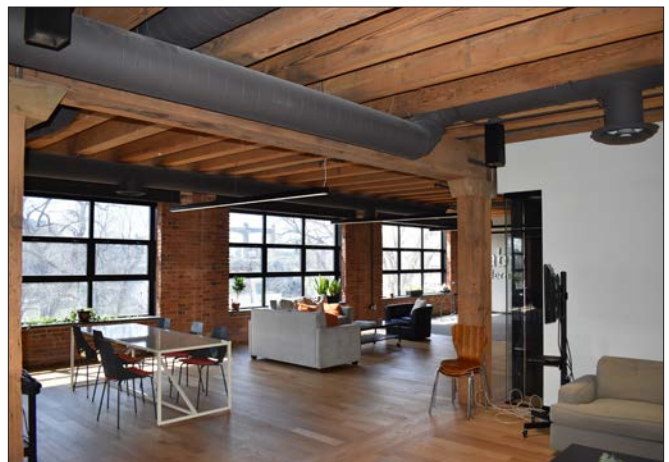
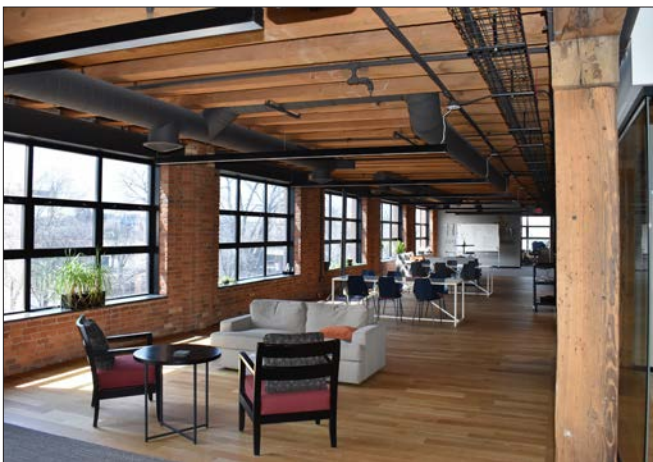
612-749-4233 | [JimKenney@Suntide.com](mailto:JimKenney@Suntide.com)



# RIVERPLACE

43 SE Main Street, Minneapolis, MN 55414

## 3RD FLOOR PHOTOS



**Jim Kenney | Senior Vice President**

2550 University Ave. W. #416S

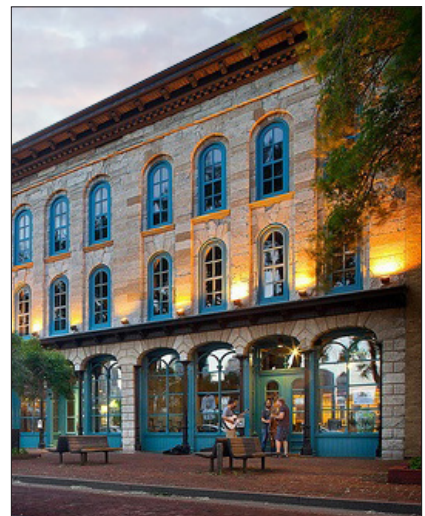
St. Paul, MN 55114

612-749-4233 | [JimKenney@Suntide.com](mailto:JimKenney@Suntide.com)



# RIVERPLACE

43 SE Main Street, Minneapolis, MN 55414



**Jim Kenney | Senior Vice President**

2550 University Ave. W. #416S

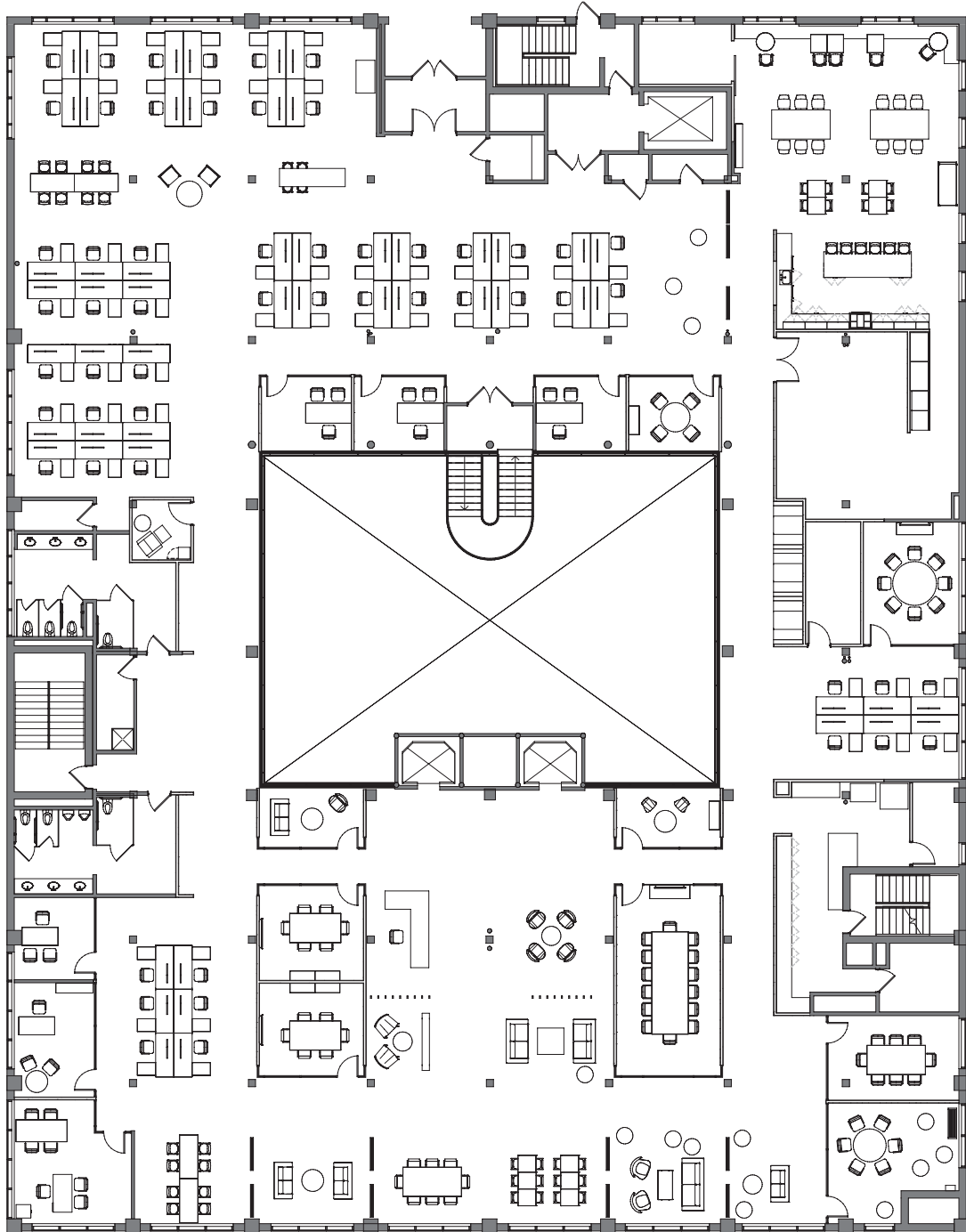
St. Paul, MN 55114

612-749-4233 | [JimKenney@Suntide.com](mailto:JimKenney@Suntide.com)

# RIVERPLACE

43 SE Main Street, Minneapolis, MN 55414

## FLOOR PLAN



**Jim Kenney | Senior Vice President**

2550 University Ave. W. #416S

St. Paul, MN 55114

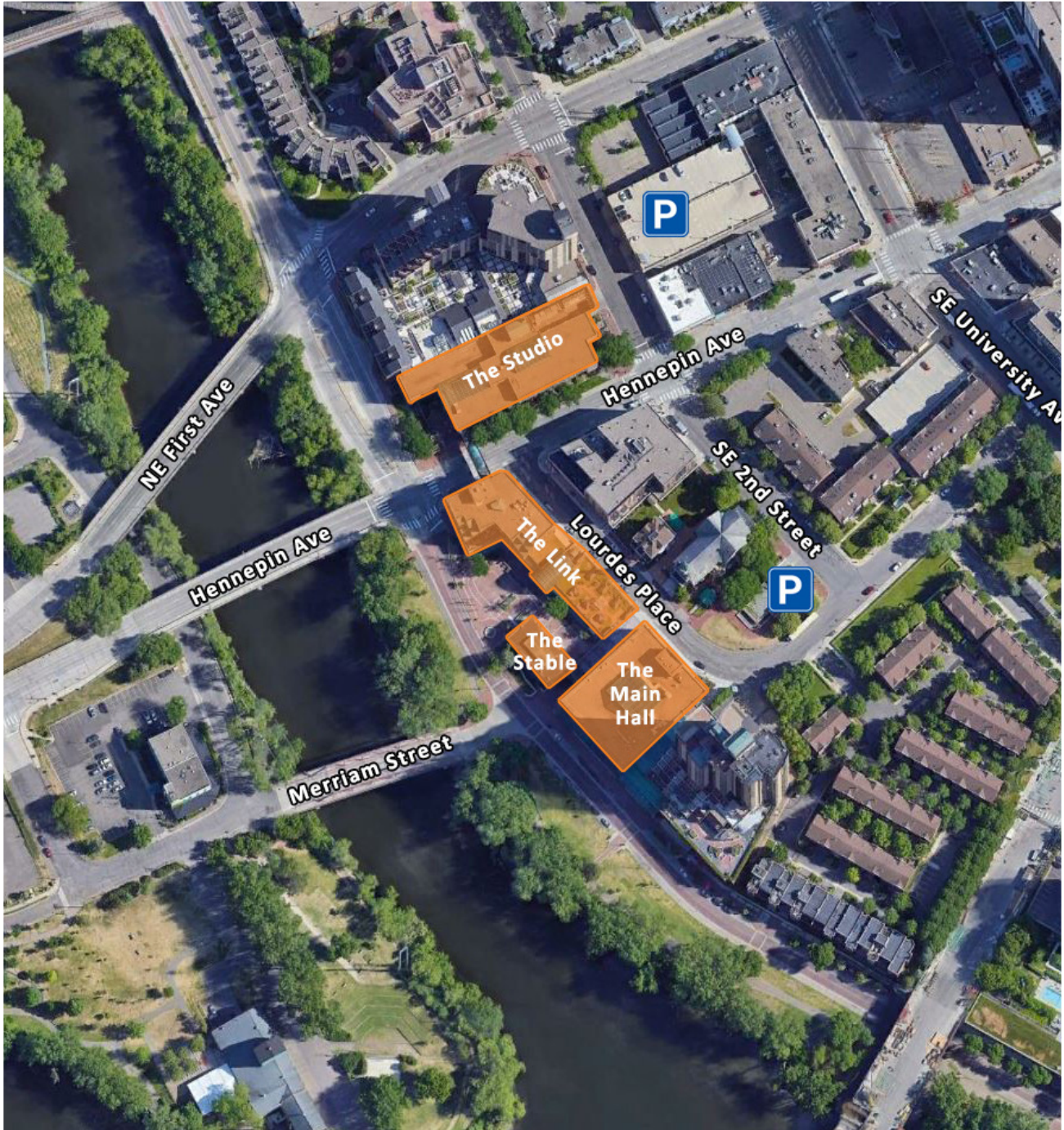
612-749-4233 | [JimKenney@Suntide.com](mailto:JimKenney@Suntide.com)



# RIVERPLACE

43 SE Main Street, Minneapolis, MN 55414

## SITE MAP



**Jim Kenney | Senior Vice President**

2550 University Ave. W. #416S

St. Paul, MN 55114

612-749-4233 | [JimKenney@Suntide.com](mailto:JimKenney@Suntide.com)