

1911 RICE STREET

1911 Rice Street, Roseville, MN 55113



SPACE FOR LEASE

STATS

Building Size 16,950 SF

Floors 2

Year Built 1956

Renovated 2022

AVAILABILITY

Suite B 1,786 to 2,286 SF

Suite D 1,036 SF

Suite E 1,265 SF

Lease Rate \$14.00-\$16.00/SF Gross

HIGHLIGHTS

- Recently updated with new windows, solar panels, and geothermal heating & cooling
- Great access to I-35E and Hwy-36
- Onsite parking available
- Free Wi-fi
- Close proximity to shopping and restaurants
- Located at intersection with four way traffic signals
- Located in Rice and Larpenteur Alliance Neighborhood
- Located in an Opportunity Zone
- Close proximity to McCarrons Lake and Lake McCarrons County Park
- METRO Transit bus stops across the street



Jeff Hart, CCIM
2550 University Ave. W. #305-S
St. Paul, MN 55114
612-747-7794
JeffHart@Suntide.com

Kevin Peck
2550 University Ave. W. #305-S
St. Paul, MN 55114
612-834-2250
KevinPeck@Suntide.com

1911 RICE STREET

1911 Rice Street, Roseville, MN 55113

PHOTOS



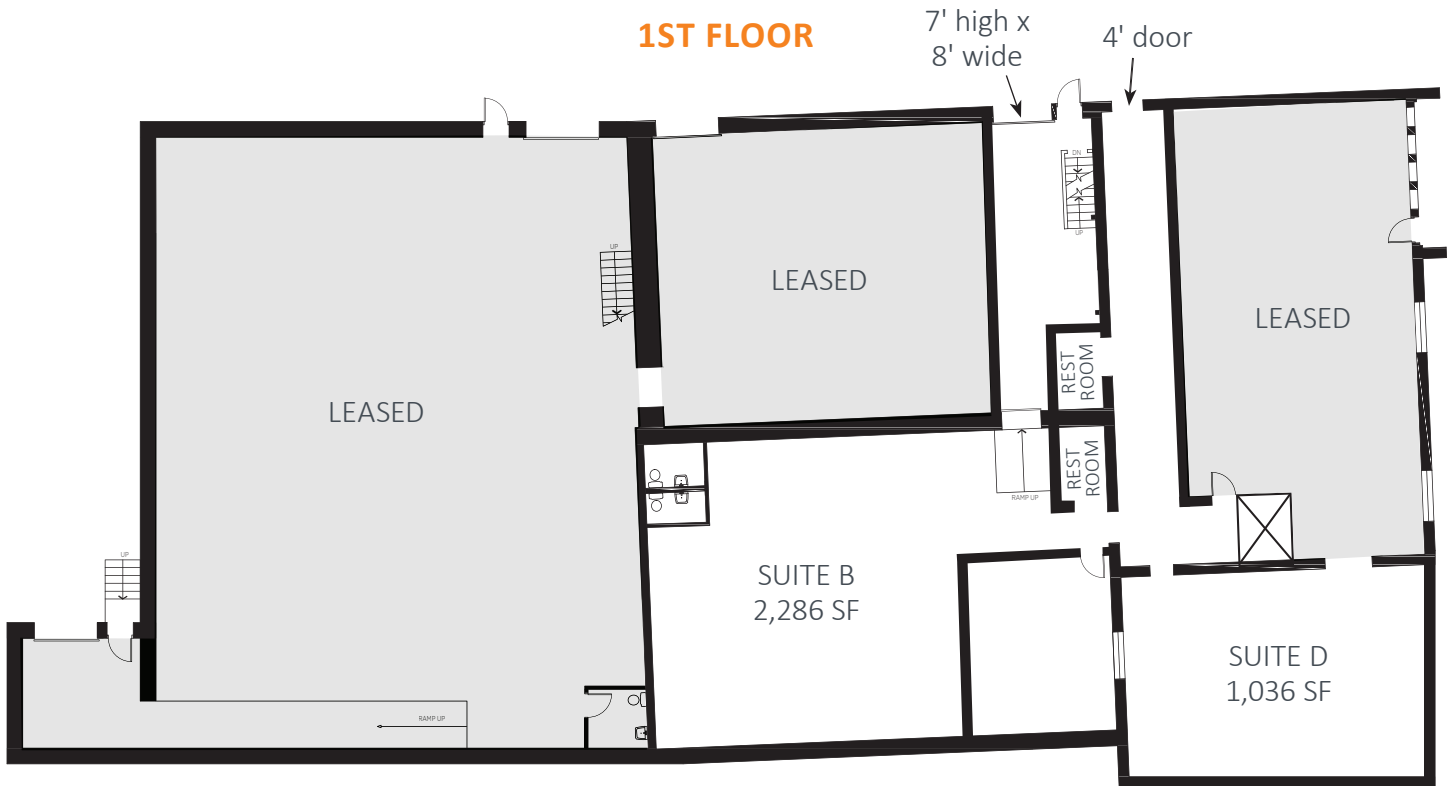
Jeff Hart, CCIM
2550 University Ave. W. #305-S
St. Paul, MN 55114
612-747-7794
JeffHart@Suntide.com

Kevin Peck
2550 University Ave. W. #305-S
St. Paul, MN 55114
612-834-2250
KevinPeck@Suntide.com

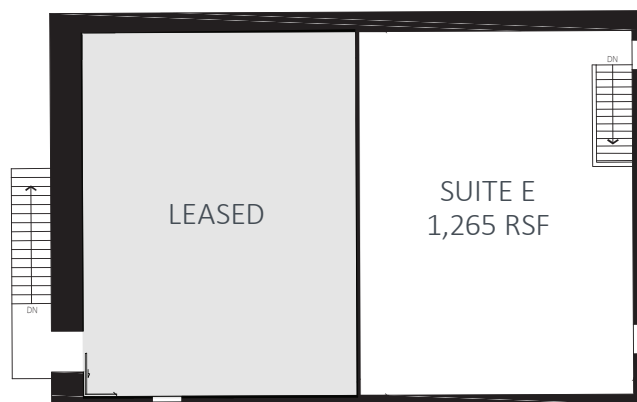
1911 RICE STREET

1911 Rice Street, Roseville, MN 55113

1ST FLOOR



2ND FLOOR



Jeff Hart, CCIM
2550 University Ave. W. #305-S
St. Paul, MN 55114
612-747-7794
JeffHart@Suntide.com

Kevin Peck
2550 University Ave. W. #305-S
St. Paul, MN 55114
612-834-2250
KevinPeck@Suntide.com