

# 16612-16622 BUCHANAN ST

16612-16622 Buchanan St NE, Ham Lake, MN 55304



## FOR SALE: LAND APPROVED FOR A FULL-SERVICE TRUCKING TERMINAL

**Size:** Approximately 9.15 acres with first rights to an additional 2.44 acres.

**Price:** \$1,300,000

**Zoned:** CD -2 Commercial Development Tier 2

**Approved for:** 85 full semi-truck and 33 passenger vehicles

### Building Features:

- 11,040 SF
- 3 Drive thru service bays (80' x 65')
- 2 Loading docks
- Warehouse (32' x 80')
- Office



**Kevin Peck**

**Senior Vice President, Principal**

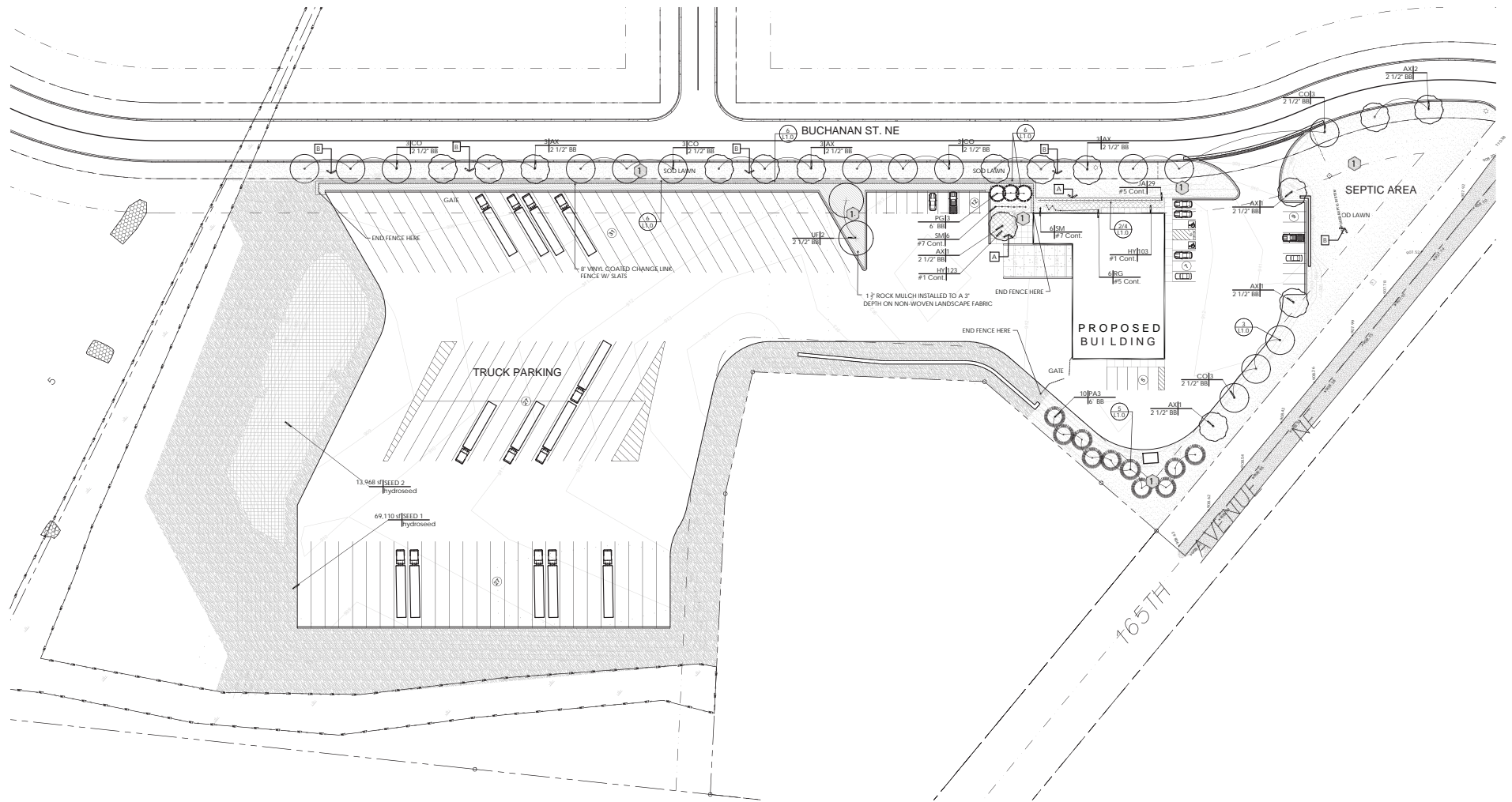
Suntide Commercial Realty

2550 University Ave. W. #305-S St. Paul, MN 55114

612-834-2250 | [KevinPeck@Suntide.com](mailto:KevinPeck@Suntide.com)

# 16612-16622 BUCHANAN ST

16612-16622 Buchanan St NE, Ham Lake, MN 55304



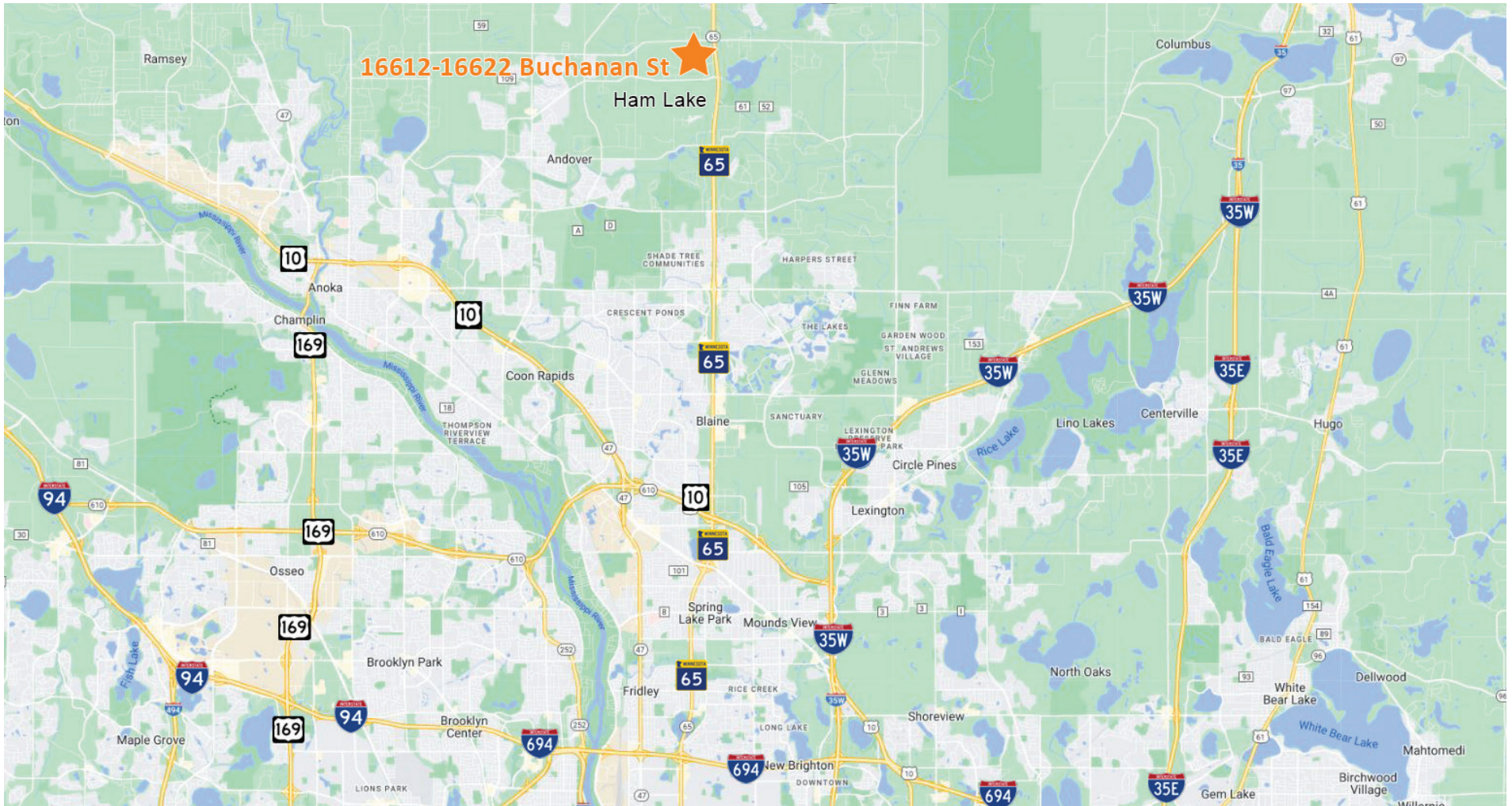
**Kevin Peck**  
Senior Vice President, Principal

Suntide Commercial Realty  
2550 University Ave. W. #305-S St. Paul, MN 55114  
612-834-2250 | [KevinPeck@Suntide.com](mailto:KevinPeck@Suntide.com)



# 16612-16622 BUCHANAN ST

16612-16622 Buchanan St NE, Ham Lake, MN 55304



**Kevin Peck**

**Senior Vice President, Principal**

Suntide Commercial Realty

2550 University Ave. W. #305-S St. Paul, MN 55114

612-834-2250 | [KevinPeck@Suntide.com](mailto:KevinPeck@Suntide.com)