



# 1000 University

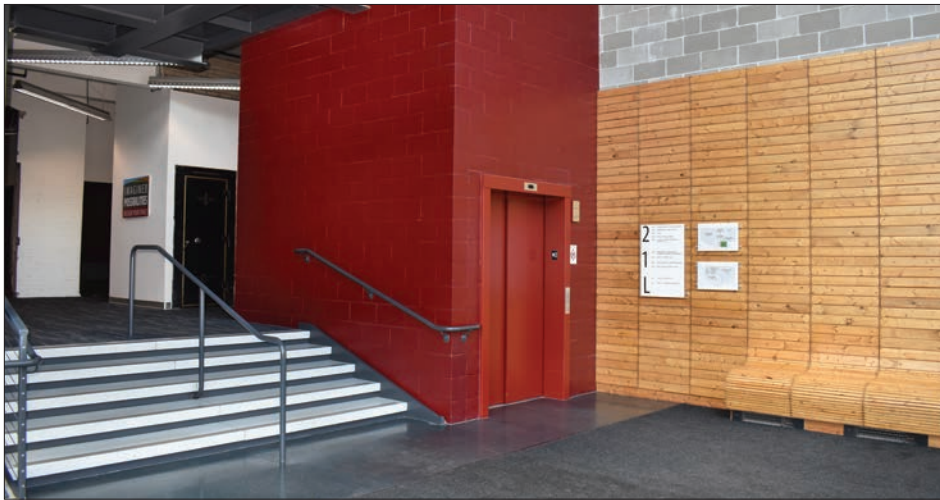
1000 UNIVERSITY AVE. W.  
ST. PAUL, MN 55114



**Jeff Hart, CCIM**  
612-747-7794  
JeffHart@Suntide.com

**Kevin Peck**  
612-834-2250  
KevinPeck@Suntide.com

# PROPERTY

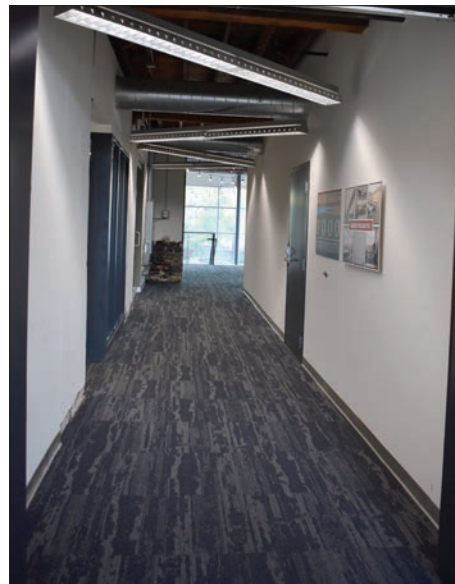


## STATS

Building Type	Office
Year Built	1913
Renovated	2018
Building Height	2 Stories
Building Size	60,002 SF
Lease Rate	\$24/SF Gross

## AVAILABILITY

Suite 222 | 1,684 SF



## FEATURES

- Off-street and underground parking
- Skylights and large windows offer plenty of natural light
- Light rail service available 2 blocks west at Lexington Avenue
- Rooftop deck
- Easy access to I-94
- Passenger elevator
- High ceilings
- Historical architecture featuring exposed brick, timber posts and beams
- Powered by renewable energy/ solar panels





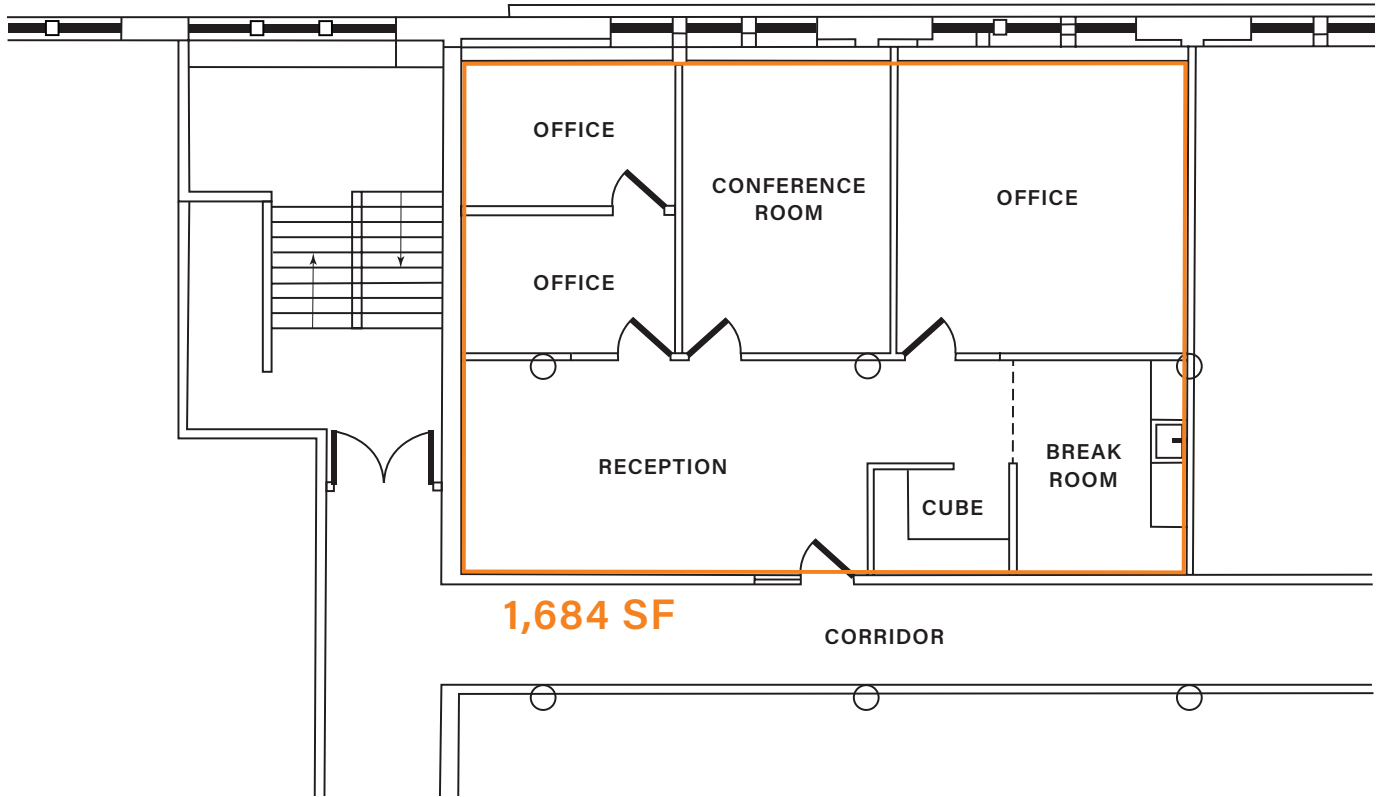
# PROPERTY

## DESCRIPTION

1000 University is an office complex in the Midway Neighborhood of Saint Paul. The property was originally a manufacturing plant with a battery shop in the back lot. Much of the building's original brickwork can be seen throughout the interior as a tribute to its 100-year-old history.



# SUITE 222





# AREA MAPS

