



1000 University

1000 UNIVERSITY AVE. W.
ST. PAUL, MN 55114



Jeff Hart, CCIM

612-747-7794

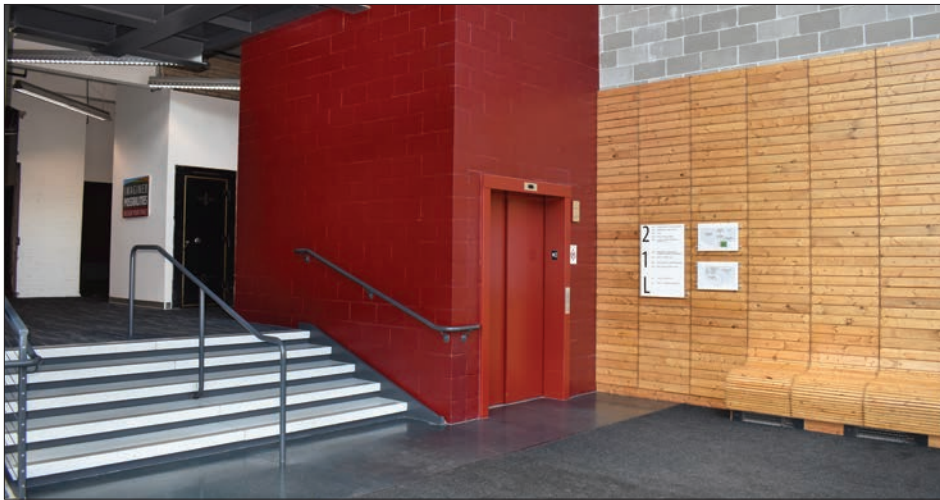
JeffHart@Suntide.com

Kevin Peck

612-834-2250

KevinPeck@Suntide.com

PROPERTY



STATS

Building Type	Office
Year Built	1913
Renovated	2018
Building Height	2 Stories
Building Size	60,002 SF
Lease Rate	\$24/SF Gross

AVAILABILITY

Suite 220 | 8,694 SF
Suite 222 | 1,684 SF



FEATURES

- Off-street and underground parking
- Skylights and large windows offer plenty of natural light
- Light rail service available 2 blocks west at Lexington Avenue
- Rooftop deck
- Easy access to I-94
- Passenger elevator
- High ceilings
- Historical architecture featuring exposed brick, timber posts and beams
- Powered by renewable energy/ solar panels



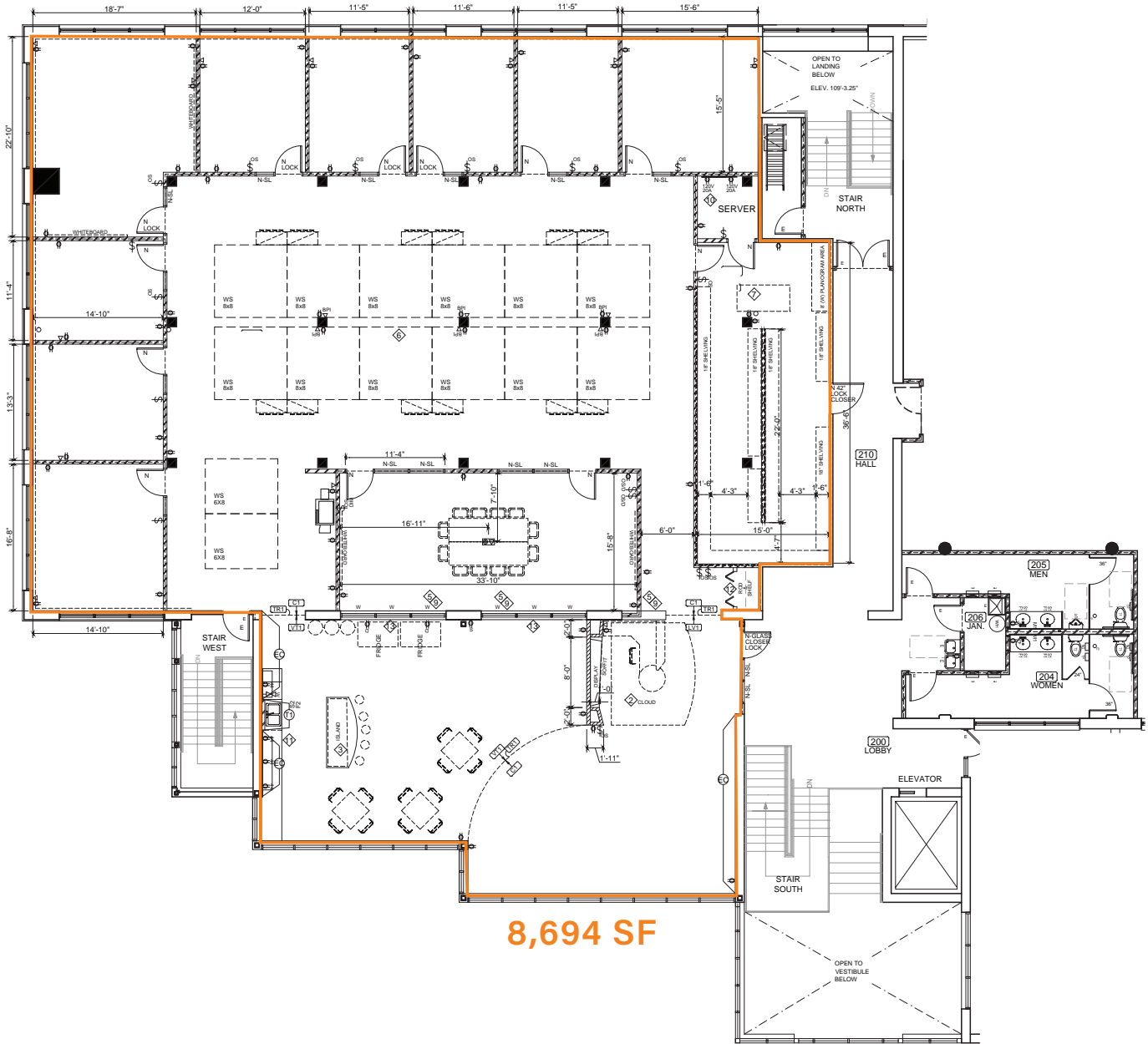
PROPERTY

DESCRIPTION

1000 University is an office complex in the Midway Neighborhood of Saint Paul. The property was originally a manufacturing plant with a battery shop in the back lot. Much of the building's original brickwork can be seen throughout the interior as a tribute to its 100-year-old history.

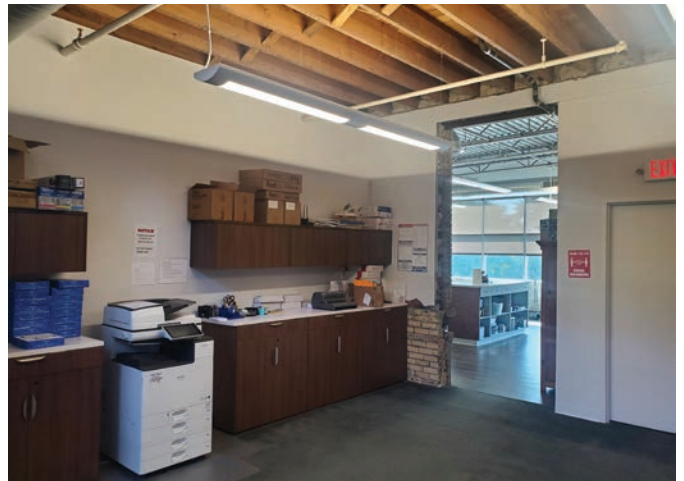


SUITE 220

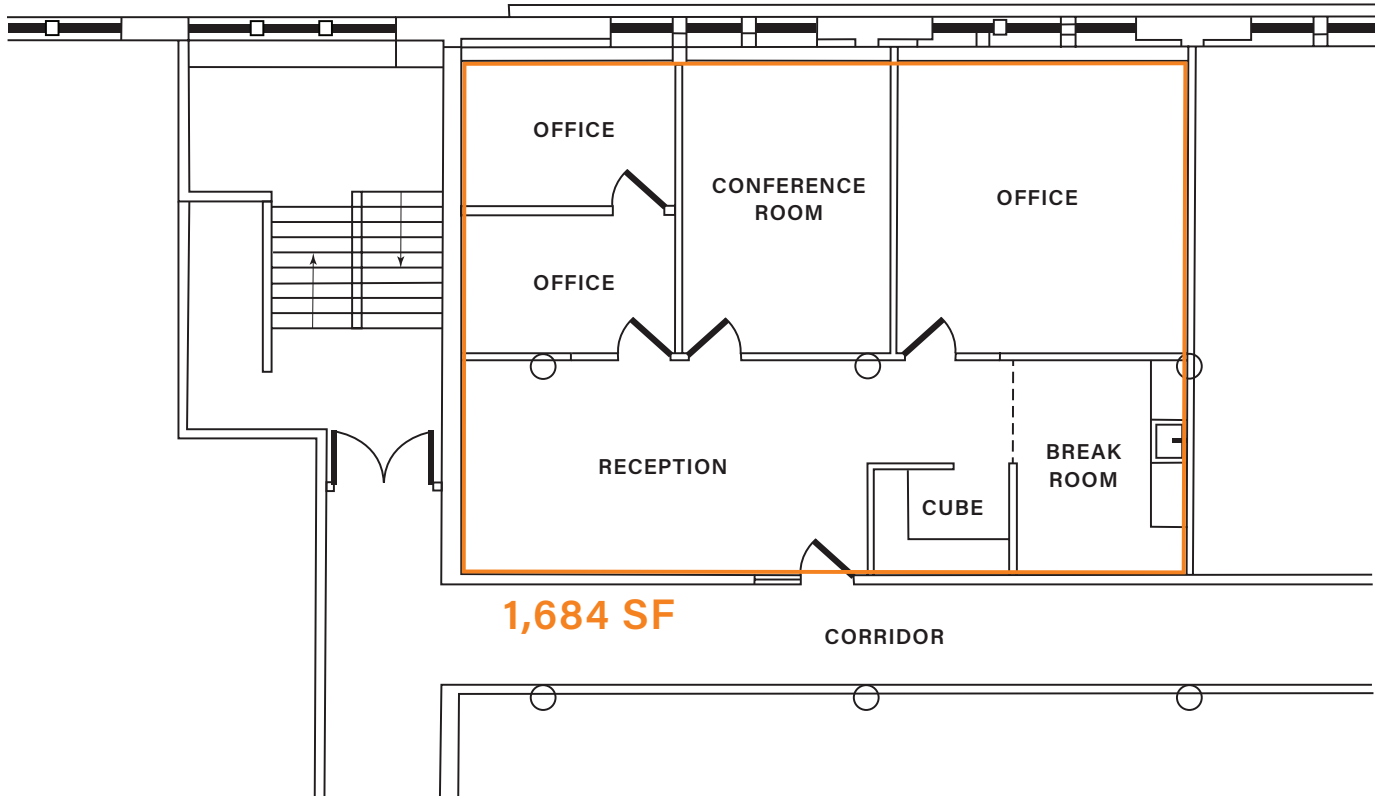


8,694 SF

SUITE 220



SUITE 222



AREA MAPS

