

BRENTWOOD TOWN OFFICES

2330-2340 Lexington Avenue North, Roseville, MN 55113



OFFICE SPACE FOR LEASE



AVAILABILITY

Suite 2334 | 1,152 SF - Lower Level
\$16 to \$18/SF Gross

FEATURES

- Split-level business complex with 5 units
- Conveniently located in Roseville off Hwy 36
- Easy access to Minneapolis and St. Paul
- Quick access to both I-35E and I-35W
- Nice finishes, move-in ready
- Off-street parking
- Signage opportunities available
- Kitchenette with sink
- Outside patio in back
- 2 minutes from Rosedale Center



Kevin Peck

2550 University Ave. W. Suite 416-S, St. Paul, MN 55114
612-834-2250 | KevinPeck@Suntide.com

BRENTWOOD TOWN OFFICES

2330-2340 Lexington Avenue North, Roseville, MN 55113

PHOTOS



Office



Office



Kitchenette



Monument Signage



Off-Street Parking



Back Patio



Kevin Peck

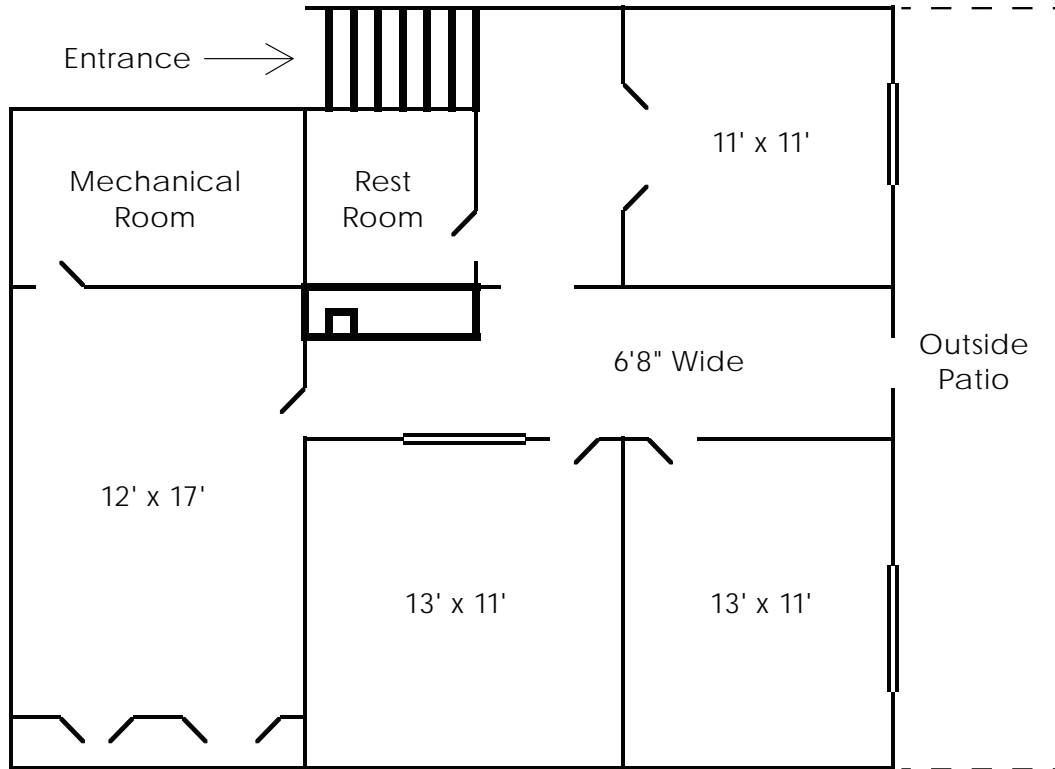
2550 University Ave. W. Suite 416-S, St. Paul, MN 55114

612-834-2250 | KevinPeck@Suntide.com

BRENTWOOD TOWN OFFICES

2330-2340 Lexington Avenue North, Roseville, MN 55113

FLOOR PLAN



AERIAL MAP



Kevin Peck

2550 University Ave. W. Suite 416-S, St. Paul, MN 55114

612-834-2250 | KevinPeck@Suntide.com